



FOGGING SYSTEM FOR GREENHOUSES



ADVANTAGES OF LUBING FOGGING SYSTEMS

LUBING Fogging Systems use the principle of direct evaporative cooling for temperature reduction and humidification of the ambient air, providing a significant contribution to optimal growth conditions.

- Optimal cooling performance and homogeneous distribution of moisture is provided by the 1015 psi (70 bar) water pressure and special high-pressure nozzles: To achieve rapid evaporation of the water mist and gain excellent cooling performance without wetting the foliage, droplets must be smaller than 20 microns. The LUBING high-pressure nozzles produce a droplet size of only 5 microns

- Active control of temperature and humidity creates a stable climate where plants thrive, increasing production yields
- Easy to install
- Possibility to control greenhouse areas separately
- Uncompromised quality and reliability

SYSTEM COMPONENTS



Pump unit D-Line

- Pump unit with direct drive
- Capable of supplying several nozzle sections with single pump unit



Touch Controller

- Interactive unit processes temperature/humidity sensor data to control and monitor operation of pump unit
- User-friendly touchscreen interface



Filter unit

- Central filter unit for particle-free water



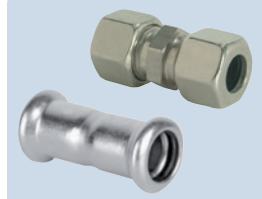
Nozzle line with nozzles

- Stainless steel tube 19' 8" (6 m) with welded adapters and stainless steel nozzles



Valve

- Solenoid valves offer individual activation of separate zones
- Easy installation on new and existing systems



Stainless Steel pipe couplings available in two options

- Cutting Ring: compression nut and ferrule coupling installed with standard tools
- Press Fix: permanent press fit coupling installed with Lubing forming tool

CAPACITY

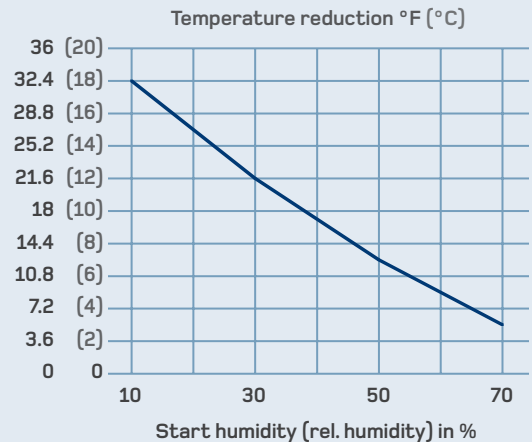
Maximum cooling capacity

Start temperature	96.8°F (36°C)	96.8°F (36°C)	96.8°F (36°C)	96.8°F (36°C)
Start humidity	10%	30%	50%	70%
End temperature	64.4°F (18°C)	75.2°F (24°C)	84.2°F (29°C)	91.4°F (33°C)
End humidity	85%	85%	85%	85%
Cooling capacity	64.4°F (18°C)	53.6°F (12°C)	44.6°F (7°C)	37.4°F (3°C)

Flow rate pump types:

- 0.5 gpm (2 l/min) (40 nozzles)
- 1.3 gpm (5 l/min) (60 nozzles)
- 3.2 gpm (12 l/min) (150 nozzles)
- 5.5 gpm (21 l/min) (250 nozzles)
- 7.9 gpm (30 l/min) (350 nozzles)
- 10.0 gpm (38 l/min) (400 nozzles)
- 18.5 gpm (70 l/min) (800 nozzles)

Other pump sizes upon request.



LUBING