

LUBING

LAYER DRINKING SYSTEMS

4077 / 4078 / 4090 / 4095 - 360° ACTION NIPPLES



RELENTLESS QUALITY. EXCEPTIONAL SERVICE.

FEATURES AND BENEFITS

360° side action triggering - Our broiler nipples offer easy triggering and get day-old birds off to the best start.

Ideal Flow - The ideal water flow of the nipple results in optimum performance at every age and improved litter conditions.

One Nipple from Start to Finish - Birds are raised on the same nipple that they will use for egg production.

Adaptable to all layer housing designs - Our layer nipple systems are custom designed to fit any style housing system for pullet and layer production.

Trouble-free performance - All metal components are manufactured with precision machined stainless steel and DO NOT require O-rings, seals or steel balls.

Raised water entry point - The nipple's raised water entry point inside the water pipe eliminates the possibility of sediments from entering the nipple.

20 micron test - Unlike competitors' systems, LUBING Nipples reduce risk of blocking water flow by allowing particles up to 20 microns to pass through nipples.

4077 NIPPLE



4078 / 4090 NIPPLE



4095 NIPPLE



Nipple	Water Column	Side Flow (mL/min)	Vertical Flow (mL/min)
4077	8"	20 - 30	40 - 50

Nipple	Water Column	Side Flow (mL/min)	Vertical Flow (mL/min)
4078	8"	20 - 30	40 - 50
4090		15 - 20	25 - 30

Nipple	Water Column	Side Flow (mL/min)	Vertical Flow (mL/min)
4095	8"	20 - 25	30 - 40

OPTIMA E-FLUSH PRESSURE REGULATOR

Our Optima E-Flush pressure regulator has built-in flushing capabilities with a simple half twist of a knob. Water pressure is easily adjusted with the regulator knob located underneath the unit. The clear flexible standpipe with float ball offers accurate reading of water pressure.



SOLENOID

The optional screw-in solenoid allows automatic flushing of the drinker line when used with the LCW Touch Control. Manual flushing is also still possible when using the solenoid.



Optional solenoid

CONTROLLER

With the LUBING LCW Touch Control and solenoids you can program your system to automatically flush on a set schedule, or with a push of a button. With the available temperature sensor it is also possible to flush when water temperature exceeds a desired max temperature.



SLOPE REDUCER

The patented slope reducer effectively adjusts water pressures on the drinking line in buildings with sloped floors. Slope reducers are available 4", 6", and 8" slope increments.

An adjustable slope reducer is available and can be adapted to the slope specific at your farm.

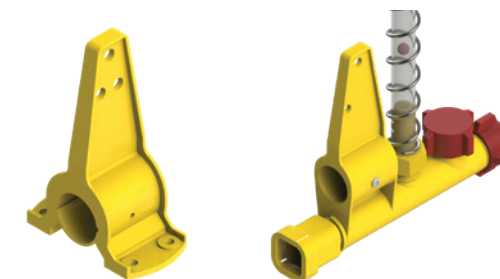


FLUSH BREATHER UNIT

The flush breather unit incorporates a clear flexible standpipe and float ball for establishing an accurate water pressure adjustment, and also includes hose attachments for automatic flushing and cleaning.



OPTIONAL CONDUIT SUPPORT



Our optional watering support rails allow our customers flexibility in building the watering system that best meets their needs. Customers can now choose between aluminum support rails and 3/4 inch conduit. Our modular design also makes it easy to retrofit LUBING watering sections onto any competitor's drinker lines without having to replace existing suspension, aluminum/conduit, regulators and end assemblies.

UPGRADE SECTIONS

Upgrade your existing sections without changing the entire drinking system. Pipe/Rail adapters are designed to accommodate LUBING square water pipes onto any nipple drinking system.



SNAP STARTER CUP:

The 3007 Snap-Starter-Cup is used for the rearing phase of laying hens. The Snap-Starter-Cup is fixed over the nipple at the nipple pipe. Our Top-Nipple or standard nipple is required for use.



NOTE: Watering sections are shipped completely pre-assembled. Only galvanized connectors and hangers are not assembled. Ten complete sections are packed in one carton. Cartons are protected, carefully banded and shipped on skids.

Number of Birds per Nipple:

10-12 - For all nipples

Max. Recommended System Length:

250' (80 m) per Regulator

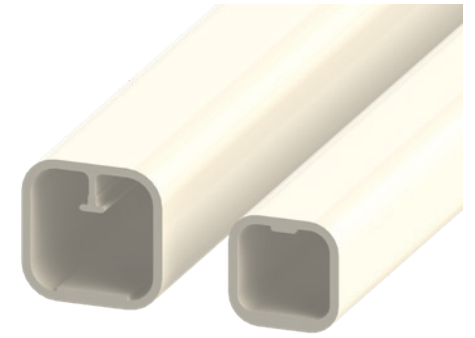
Pressure Regulator:

min. 20 psi

max. 45 psi

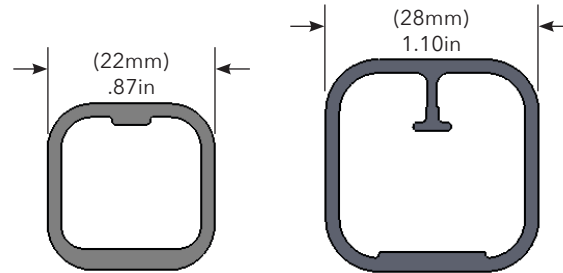
22MM VS 28MM PIPE COMPARISON:

Cross Sectional Area (square inches)	
A	.4714
B	.8452
Fluid Volume per 10 ft (oz / gal)	
A	31.35 / .245
B	56.2 / .439



A - 22mm pipe

B - 28mm pipe



FROM OUR HANDS TO YOUR FARM

LUBING is located in Cleveland, Tennessee, where we personally inspect every product before it arrives at your farm.

We maintain a large inventory to fulfill orders quickly, knowledgeable team members are available to help you determine what you need, and we work with you to ensure that your equipment is working to its full potential.

