

# LUBING

**BELT CONVEYOR**  
OVOTRAC-60 BELT CONVEYOR



RELENTLESS QUALITY. EXCEPTIONAL SERVICE.

## OVERVIEW

Egg producers fully understand how critical the egg conveying process is to a successful laying complex. The safe handling of eggs can save a large producer hundreds of thousands of dollars over a relatively short period of time. That is why at LUBING we are committed to continually find ways to improve the egg conveying process by using the latest technologies, resulting in the most energy efficient, safe, gentle, and reliable handling of your eggs.

The OvoTrac-60 is capable of up-to 750 cases per hour, and is the latest example of our innovation in egg conveying systems. Give your eggs the safest ride possible and protect the return on your investment with a quality system from LUBING.

**Cantilevered Design**  
Allows drive unit location outside process area

**Idler Unit**  
Made with all stainless construction and straight solid steel roller for smooth transfer and integrated urethane self-adjusting belt scraper

**Transfer Unit**  
Offers complete tool-free fine-tuning capabilities (in/out, up/down and angle adjustment)

**Egg Belt**  
FDA/USDA approved PVC, eliminates cupping at edges, allows for high-strength splicing

Available with fire retardant, UV Inhibitors and antimicrobial properties

150-lbs/in width strength  
0.165-in (4.2mm) thick

**Double Spherical Roller Bearings**  
Allow greater flexibility for belt tracking

**Steel Rollers with Grease-Packed Sealed Bearings**  
Galvanized steel rollers offer minimal deflection for wider width belts when compared to PVC rollers. Rollers are easily installed or removed without the need for tools using the spring-loaded hex-shaped axle.

**Gearmotor**  
High efficiency 10hp parallel helical gearmotor (Inverter duty with integrated brake)

**Drive Roller**  
Mine-duty vulcanized rubber with herringbone grooves

**Solid Steel rollers**  
Made from high-strength steel for increased durability and less deflection

**Pneumatic panel**  
Compact, oil-less design for precise regulation of take-up cylinders, air filtration, mist separation and shut-off. Can be mounted on either side for easy access and includes lock-out/tag-out feature for maintenance safety

**Connecting Part**  
Formed galvanized steel sidesheets support the 1.9" diameter galvanized steel rollers. Recently added tensions braces increase rigidity and keep sidesheets square under load. Mounting options include feet or suspension kits. Urethane belt scrapers are also available as an optional accessory.

**End Unit**  
All stainless steel construction, tapered roller for efficient tracking and integrated self-adjusting belt scraper

## Drive / End Unit Frames



Custom mounting frames are based on individual needs and offer a rigid design and secure mounting. Custom frames are available from LUBING or prints can be provided.

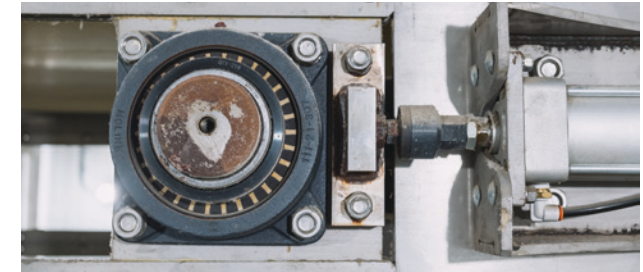
## Diverter Arms



The optional diverter arms can be installed anywhere on the system. The 60-inch (1,524mm) long diverter allows the eggs to be moved slowly and gently on the belt, reducing the risk of checks.

**Drive Unit**  
All heavy-duty, stainless construction, integrated tracking and urethane self-adjusting belt scrapers.

## Take-Up Assembly



Self-adjusting pneumatic take-up for maintenance-free belt tensioning. Horizontal mounting offers improved response to changing demands with double take-up length and lower profile design.

(Can be mounted with drive unit or mounted separately)



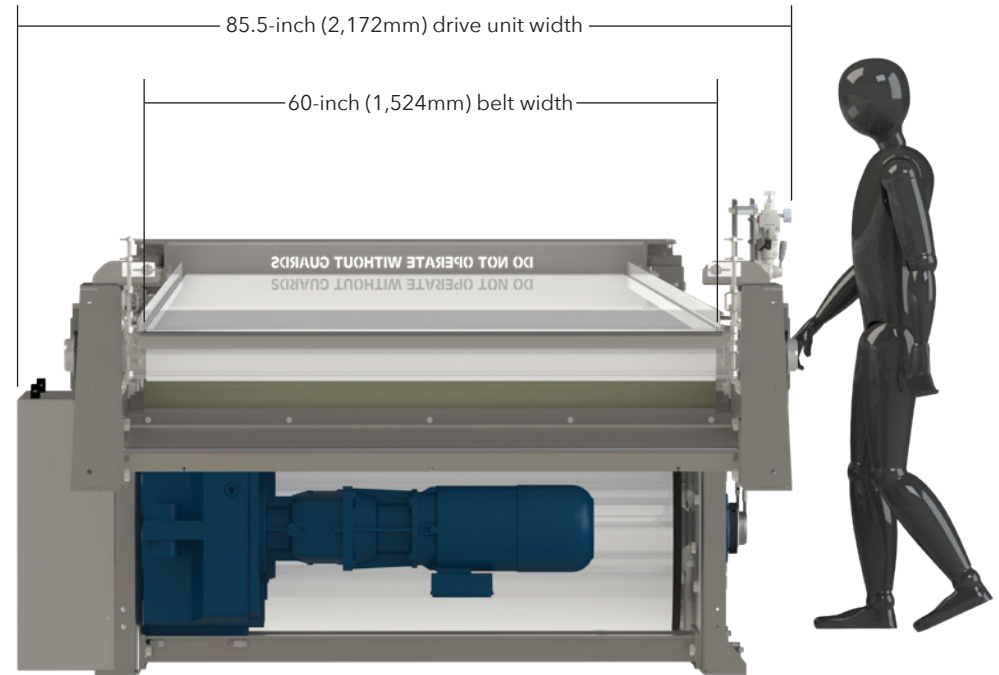
LUBING certified installation services are available upon request.

## FEATURES AND BENEFITS

- Engineered and FEA simulated for real-world stresses and loads
- Maximum operational safety and minimum maintenance
- Efficient design = energy savings (ROI and cost of ownership)
- Internal gearmotor mounting, compact design, requires less space
- Automatic tensioning and self-adjusting pneumatic take-up
- Single drive unit = less maintenance, minimal electrical install
- Spherical bearings offer prolonged shaft life and improve tracking
- High strength steel shaft for extended life and minimal deflection
- Self-adjusting urethane scrapers
- Egg transfer assembly allows tool-less precision adjustments

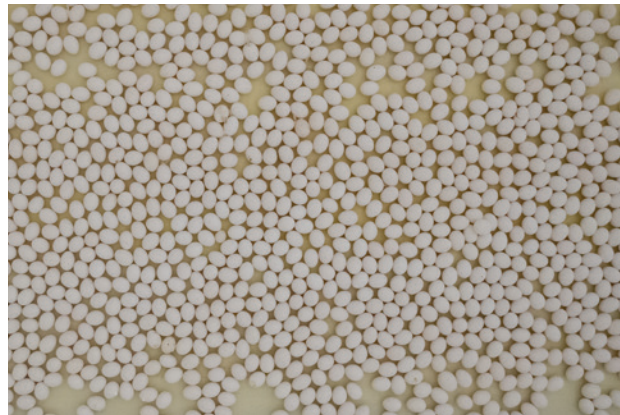
### Josh Bandy

Conveyor Sales Manager  
423-716-0181  
jbandy@lubingusa.com



#### Egg Belt

Width: 60-inch (1,524mm) belt width  
Lengths (up to): 2,000 feet (580m)  
Capacities: 750 cases per hour



USDA/FDA approved with optional UV inhibitors, fire retardant and antimicrobial properties



#### Drive Roller

Mine-duty vulcanized herringbone rubber, 270 degrees of belt wrap

