

LUBING

FOGGING SYSTEM
FOR POULTRY AND EGG PRODUCTION



RELENTLESS QUALITY. EXCEPTIONAL SERVICE.

OVERVIEW AND HOW IT WORKS

The LUBING Top Climate System is designed to efficiently cool and humidify environments. Utilizing the principle of direct evaporative cooling, it reduces temperatures and increases air humidity, fostering ideal growth conditions. Operating at an exceptionally high system pressure of 1015 psi (70 bar) with specialized high-pressure nozzles, the system disperses water as fine 5-micron droplets. These droplets evaporate instantly, drawing thermal energy from the surrounding air, thereby cooling and stabilizing the indoor climate.

SYSTEM COMPONENTS



Pump unit D-Line

- Pump unit with direct drive
- Capable of supplying several nozzle sections with single pump unit



Touch Controller

- Touch screen controller processes temperature/humidity sensor data to control and monitor operation of pump unit
- Can be quickly configured for interface with houses controller



Filter unit

- Central filter unit offered standard with system
- Multi stage filtering provided by four individual filters - 25, 10, 5, 1 micron



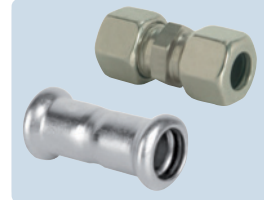
Nozzle line with nozzles

- Stainless steel tube 19' 8" (6 m) with welded adapters and stainless steel nozzles



High Pressure Valves

- Solenoid valves offer individual activation of separate zones
- Easy installation on new and existing systems



Stainless Steel pipe couplings available in two options

- Cutting Ring: compression nut and ferrule coupling installed with standard tools
- Press Fix: permanent press fit coupling installed with crimping tool

MAXIMUM COOLING CAPACITY

Start temperature	96.8°F (36°C)	96.8°F (36°C)	96.8°F (36°C)	96.8°F (36°C)
Start humidity	10%	30%	50%	70%
End temperature	64.4°F (18°C)	75.2°F (24°C)	84.2°F (29°C)	91.4°F (33°C)
End humidity	85%	85%	85%	85%
Cooling capacity	-32.4°F (-18°C)	-21.6°F (-12°C)	-12.6°F (-7°C)	-5.4°F (-3°C)

ADVANTAGES OF LUBING FOGGING SYSTEMS

- Active control of temperature and humidity creates a stable climate where plants thrive, increasing production yields
- Customized engineered layout provided with each system to optimize conditions
- Individual zones within the environment offered based customer requirements
- System can be easily integrated with house control
- Fogger and supply lines utilize stainless steel construction
- System is easy to install

